

Lymphangiectasis - A Case Report

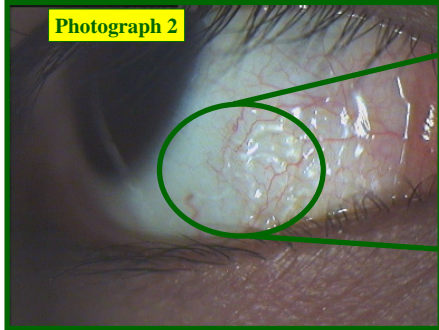
Craig A Woods BSc PhD MCOptom DCLP FAAO
Melbourne Optometry Clinic, Victorian College of Optometry*

Abstract

This poster presents a pictorial case report on the condition, spontaneous lymphangiectasis. This condition is benign and does not have any pathogenic origin. Ms A presented for a routine contact lens after care – she was asymptomatic regarding her contact lens wear and unaware of any ocular changes. During the routine slit lamp examination it was observed that the conjunctiva of the right eye had a vascular network filled with a transparent fluid that was absent of red blood cells – lymphangiectasis. This condition self resolved after two days and was not a contra-indication for Ms A to continue with contact lens wear.



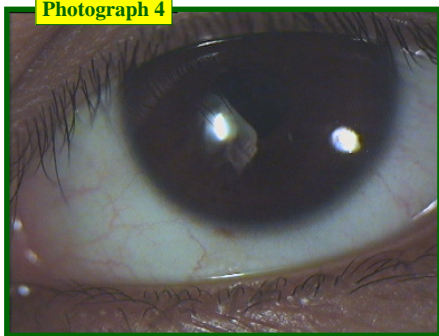
Photograph 1



Photograph 2



Photograph 3



Photograph 4

Photograph 1 and 2: The right eye, viewed by a zeiss SL - 120 digital photo slit lamp, magnification x16.
Photograph 3 (inset) magnification x 24.
Photograph 4 The right eye at review appt, magnification x 16.

Introduction

Ms A. presented for a routine aftercare check on her soft contact lenses. Ms A. wore mid-water content monthly disposable contact lenses.

Symptoms and History established that she was reasonably compliant in relation to contact lens wear and was asymptomatic. Her reason for attending was to order the next

supply of disposable contact lenses.

Examination results

Visual acuity was 6/4.8 both eyes. Slit lamp examination revealed a vascular appearing network only in the conjunctiva of the right eye. This network was filled with a transparent fluid (photographs 1-3).

Management

Patient was advised to return to collect

Discussion

Lymphangiectasis is a benign non contact lens related condition. It occurs and resolves spontaneously. Usually there is a localised blockage resulting in a bleb, rarely is the whole of the lymph system so pronounced as in this case. A patient may only complain about the condition when the bleb or vascular network is pronounced and a cosmetic concern. In this situations the bleb or network can be punctured with a needle thus aiding drainage.

her new lens supply and for a review of the condition.

At review the vascular network was no longer present in the conjunctiva of the right eye (photograph 4).

Reference

Catania, L.J. "Primary care of the Anterior Segment." pub. Appleton and Lange, Norwalk, Connecticut. 1988
Address for correspondence
Dr Craig Woods, The Victorian College of Optometry, Cnr Keppel and Cardigan Sts, Carlton 3053, Victoria, Australia.
Email: c.woods@optometry.unimelb.edu.au
*Dept of Optometry and Vision Science, University of Melbourne